

Manual V1.0

MANUAL DECRUSH BASS 25



INTRODUCTION

THANK YOU FOR CHOOSING ORANGE

Ever since the founding of the company in 1968, **Orange** has been a pioneering force in the guitar amplification industry. Today, with a team of the world's finest amplifier engineers, Orange continues to push back the boundaries of conventional amplifier design.

Our commitment to craftsmanship and quality control has allowed our amplifiers to stand the test of time, giving their owners as much pleasure now, as the day they were bought. To maintain this level of excellence, each Orange amplifier is put through many **rigorous** test procedures before leaving the factory.

This manual contains **valuable technical and safety information**. Please take the time to read this manual as the information may enhance the sound and performance of your amplifier. We are confident that you will be delighted with your new purchase and that it will provide you with many years of enjoyment. You are now a member of the Legendary British Guitar Amplifier Owners Club!

In the interests of product improvement, the contents of this manual may be subject to change without notice.

SAFETY

IMPORTANT SAFETY INFORMATION

- 1) Read these instructions.
- 2) Keep these instructions.
- 3) Heed all warnings.
- 4) Follow all instructions.
- 5) Do not use this apparatus near water.
- 6) Clean only with dry cloth.
- 7) Do not block any ventilation openings. Install in accordance with the manufacturer's instructions.
- 8) Do not install near any heat sources such as radiators, heat registers, stoves, or other apparatus (including amplifiers) that

produce heat.

9) Do not defeat the safety purpose of the polarised or grounding-type plug. A polarised plug has two blades with one wider than the other. A grounding type plug has two blades and a third grounding prong. The wide blade or the third prong are provided for your safety. If the provided plug does not fit into your outlet, consult an electrician for replacement of the obsolete outlet.

10) Protect the power cord from being walked on or pinched particularly at plugs, convenience receptacles, and the point where they exit from the apparatus.

11) Only use attachments/accessories specified by the manufacturer.

12) Use only with the cart, stand, tripod, bracket, or table specified by the manufacturer, or sold with the apparatus. When a cart is used, use caution when moving the cart/apparatus combination to avoid injury from tip-over.

13) Unplug this apparatus during lightning storms or when unused for long periods of time.

14) Refer all servicing to qualified service personnel. Servicing is required when the apparatus has been damaged in any way, such as power-supply cord or plug is damaged, liquid has been spilled or objects have fallen into the apparatus, the apparatus has been exposed to rain or moisture, does not operate normally, or has been dropped.

NO USER SERVICEABLE PARTS INSIDE. DO NOT ATTEMPT TO GAIN ACCESS TO THE INTERIOR OF THE PRODUCT. REFER ALL SERVICING TO AUTHORISED ORANGE SERVICE PERSONNEL

The lightning flash with arrowhead symbol, within an equilateral triangle, is intended to alert the user to the presence of un-insulated 'dangerous voltage' within the product's enclosure that may be of sufficient magnitude to constitute a risk of electric shock to persons.

Terminals labelled as "Speaker Outputs" must be connected to a speaker cabinet of the designated load rating using an un-shielded two conductor cable for speaker use at all times during operation.

The exclamation point within an equilateral triangle and "WARNING" are intended to alert the user to the presence of important operating instructions. Failure to heed the instructions will result in severe injury or death.

WARNING: To reduce the risk of fire or electric shock, do not expose this apparatus to rain or moisture. For indoor use only. Do not place liquids, or objects containing liquids on or near the apparatus

Models which use a mains cord/plug to connect to the mains electricity supply must be connected to a mains socket outlet with a protective earthing connection. The voltage selector switch and mains fuse are set at the factory for the country or region in which this Orange product is intended to be sold. To prevent serious damage to the product, ensure that the rated AC mains voltage indicated on the product's rear panel agrees with the mains voltage from your AC mains outlet before connecting the mains cord/plug.

If the product is to be used outside of the factory set region, ensure the voltage selector switch (found on the rear or side panel) is set to the correct voltage for the new country/region and that the appropriate mains fuse is fitted in the pull-out fuse tray below the IEC mains input.

The correct mains fuse rating for your product is printed on the chassis. Use only the same 250V type and rating as specified for the product. Different operating voltages may require the use of different types of line cord and attachment plugs. If you are unsure, contact your Orange Dealer.

This Orange product fulfils the requirements of IEC 60065:2001 (Seventh Edition) + A1:2005 + A2:2010 for Audio, Video and Similar Electronic Apparatus.

This product complies with the WEEE Directive (2002/96/EC) marking requirement. This affixed product label indicates that you must not discard this electrical/electronic product in domestic household waste. Please contact your local authority for details of your nearest approved recycling facility.

This device complies with the Canadian Interference Regulations CAN ICES-3(B)/NMB-3(B).

This device complies with Part 15 of the FCC rules. Operation is subject to the following two conditions:

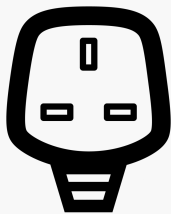
1. This device may not cause harmful interference.
2. This device must accept any interference received, that may cause undesired operation.

Note: This equipment has been tested and found to comply with the limits for Class B digital device, pursuant to Part 15 of the FCC Rules. These limits are designed to provide reasonable protection against harmful interference in a residential installation. This equipment generates, uses and can radiate radio frequency energy and if not installed and used in accordance with the instructions, may cause harmful interference to radio communications.

However, there is no guarantee that interference will not occur in a particular installation. If this equipment does cause harmful interference to radio or television reception, which can be determined by turning the equipment off and on, the user is encouraged to try and correct the interference by one or more of the following measures.

- Reorient or relocate the receiving antenna.
- Increase the separation between the equipment and receiver.
- Connect the equipment into an outlet on a circuit different from that to which the receiver is connected.
- Consult the dealer or an experienced radio/TV technician for help.

CARACTERÍSTICAS DEL PANEL



Potencia

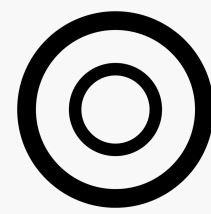
La luz de encendido se iluminará cuando el interruptor de **encendido** (trasero) esté en la posición **ON**.



Teléfonos

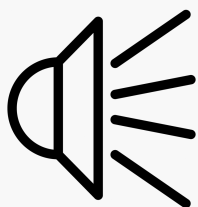
Para utilizar con la mayoría de los auriculares estéreo con conexión de 6,35 mm. La salida PHONES también cuenta con Cabsim para un sonido más auténtico, y puede utilizarse para enviar una señal a una consola de grabación/mezclador. El altavoz interno es desconectado cuando la salida PHONES está en uso.

Nota: Para evitar posibles daños auditivos, no utilice los auriculares a niveles de volumen elevados durante períodos prolongados.



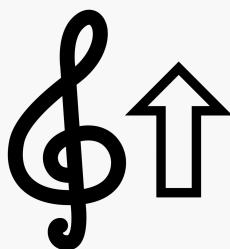
Entrada Auxiliar

Para utilizar con reproductores de MP3, ordenadores portátiles, etc. mediante un cable de audio de 3,5 mm. La señal de audio se suma internamente en mono.



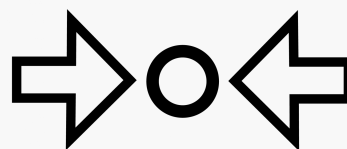
Volumen

Controla el nivel de volumen de salida.



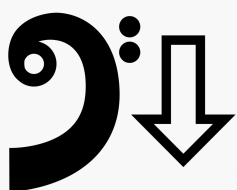
Agudos

Ajusta las frecuencias superiores con hasta 20dB de realce (ajuste máximo) o corte (ajuste mínimo).



Medio

Controla el efecto del dial FREQ con hasta 15dB de realce (ajuste máximo) o corte (ajuste mínimo).



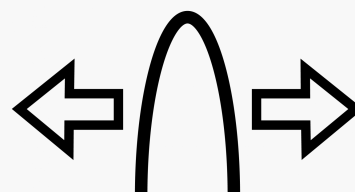
Bajo

Ajusta las frecuencias bajas con hasta 15dB de realce (ajuste máximo) o corte (ajuste mínimo).



Entrada

Utilice un cable de instrumento apantallado de calidad para conectar su instrumento a la toma INPUT. El interruptor PAD selecciona el nivel de entrada correcto para los bajos con pastillas activas o pasivas. PAD activado = -6dB.



Frecuencia

Selecciona la frecuencia central del control MIDDLE, con un barrido de 300Hz (mínimo) a 2,7kHz (máximo). Nota: Cuando el control MIDDLE está en el centro (posición de las 12), mover el control FREQ no tendrá ningún efecto audible..

Sintonizador

Pulse el botón ON/OFF para activar el **afinador cromático** integrado.

Ajuste el **volumen** a cero para una sintonización silenciosa si es necesario.

El LED rojo correspondiente se iluminará en la pantalla para indicar la nota que se está reproduciendo. Si el LED verde # también se ilumina, esto indica que se trata de una nota cromática, por ejemplo, Fa sostenido (F#).

El LED de la flecha > indica que la nota está afinada con un tono demasiado **bajo**.

La flecha LED < indica que la nota está afinada demasiado **alta**.

Ajuste el tono de la cuerda en la dirección indicada por las flechas hasta que se encienda el LED verde **OK**.



1. Entrada de la red de CA

Consulte la sección **“Antes de utilizar el amplificador”**.
Conecte el cable IEC suministrado a la entrada de red de CA.
Asegúrese de que el interruptor de alimentación está en OFF
antes de conectar el cable IEC.

2 Fusible de red

El fusible de red se encuentra en la bandeja extraíble situada
debajo de la entrada de red de CA. Si se funde el fusible de la
red, sustitúyalo **sólo** por el de la potencia exacta para su
región. Si el fusible de la red eléctrica sigue fundiéndose,
póngase en contacto con su **Orange** distribuidor.

100V/120V: T2A

230V: T1A

3. Interruptor de selección de voltaje

¡IMPORTANTE!

Consulte la sección **“Antes de utilizar el amplificador”**.
Ajustado de fábrica a la región en la que se pretende vender
el amplificador.

4. Interruptor de encendido

Asegúrese de que los controles de volumen del amplificador
están a cero antes de conectar la alimentación del
amplificador. Apagar cuando no se utilice.

ACCESORIOS RELACIONADOS

Estos artículos son compatibles con su producto Orange. Para los clientes de Estados Unidos, haga clic [aquí](#).

JOIN OUR
NEWSLETTER

Subscribe

ÚLTIMA
ENTREVISTA



Wishbone Ash "Argus"
50 Aniversario

octubre 14, 2022 - 9:00 am

ÚLTIMAS NOTICIAS



EL OR120 DE 1974 –
HISTORIA, LEGADO Y
MANTENIMIENTO,
PARTE 1

octubre 26, 2022 - 8:00 am

O BONES

